



*No other playground surfacing material offers the degree of safety assurance that rubber tiles can provide. Ultimate RB BOUNCE-BACK Playground Tiles are shock absorbing, resilient, rubber tiles that provide long-term answers to playground safety and features ADA accessibility.*

**BOUNCE-BACK PLAYGROUND TILES BENEFITS**

RECYCLED RUBBER	COLOR OPTIONS	ADA COMPLIANT
WEATHER & SLIP RESISTANT	MOISTURE PERMEABILITY	EXCELLENT DRAINAGE
INTERLOCKING OPTIONS	INSTALLATION EASE	QUALITY/WARRANTY
DESIGN FLEXIBILITY	MAINTENANCE EASE	IPEMA CERTIFIED

Each year over 200,000 children are injured on playgrounds in the United States. Many of these injuries result from children falling onto inadequate surfacing. Ultimate RB BOUNCE-BACK Playground Tiles offer a solution to this problem in a durable and attractive rubber tile product.

Select BOUNCE-BACK Tiles are designed to meet federally mandated critical fall height requirements for playground equipment up to 10 feet tall. These tiles have been certified to comply with these requirements by IPEMA through TUV/SUD, a third party independent testing and certification laboratory. Ask for the IPEMA certified model when ordering.

Wood and rubber mulch products are easily displaced, resulting in inadequate thickness and protection in large areas of the playground. They also present an undesirable and dangerous opportunity for children to swallow, throw, or kick the material. Poured-in-Place products can only be installed in specific weather conditions which limits the window for installation. Ultimate RB's factory-produced BOUNCE-BACK Tiles eliminate these problems and offer the assurance of safe surfacing for children's play areas.



# BOUNCE-BACK PLAYGROUND TILES SPECIFICATIONS



## TYPICAL PROPERTIES

### TILE SIZES

**Interlocking** 24" X 24" X 2.5"

**Interlocking** 24" X 24" X 3.5"

**Square Non-Interlocking** 24" X 24" X 2.5"

**Square Non-Interlocking** 24" X 24" X 3.5"

**Square Non-Interlocking** 24" X 24" X 4"

### THICKNESS

#### Standard:

2.5" (6' FALL PROTECTION)

3.5" (8' FALL PROTECTION)

4" (10' FALL PROTECTION)

### BINDER

URETHANE



## TILE SPECIFICATIONS

TEST TYPE	ASTM	RESULT
WATER PERMEABILITY	-----	.27 GAL/MIN/SQ. YD.
LEAD CONTENT	D-4004	5.97 PPM
ABRASION RESISTANCE	D-4060	WEAR INDEX 657 AVG - DURABILITY
TEAR STRENGTH	D-624	124 LBF/IN & PSI AVG - DURABILITY
DUAL DUROMETER	-----	25/45 - RESISTANCE
WEATHERIZATION	C67/D573	NO FAIL AFTER FREEZE/THAW/DRY
FALL HEIGHT	F-1292	MET CRITERIA
COEFFICIENT OF FRICTION	D-1028	.65 DRY/.63 WET
HEAVY METAL	F-963-7	MEETS ALL CPSC REQUIREMENTS

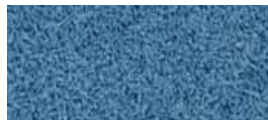
The values shown represent independent and production laboratory taken tests for the 24"x24" tiles, which may vary slightly by color or when field tested.

## COLOR OPTIONS

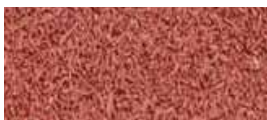
### COLORS FOR PIGMENTED COLOR TOP TILES



HAZELNUT BROWN



DENIM BLUE



CAYENNE RED



CASCADE GREEN



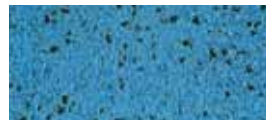
BLACK



STORM GREY

Storm Grey also available.

### COLORS FOR PREMIUM ONE COLOR EPDM TILES



STREAMSIDE BLUE



RAINFORREST GREEN



DESERT CLAY RED

### COLORS FOR PREMIUM TWO COLOR EPDM TILES



ALPINE MEADOW GREEN



SANDY BEACH TAN



CRATER LAKE BLUE

## WARRANTY

Ultimate RB BOUNCE-BACK Playground Tiles carry a 10-year limited warranty for defects in material. Refer to UltimateRB.com for limited warranty document.

Rev 8/19 | Ult. #17



1430 North Main St.  
Delphos, OH 45833  
T. 419.692.3005

904 NE 10th Ave.  
McMinnville, OR 97128  
T. 503.472.4691



© 2019 Ultimate RB  
All rights reserved  
www.UltimateRB.com